



**House & Land Package**

From **\$690,996\***

**Edgewater 205**

4 2 2

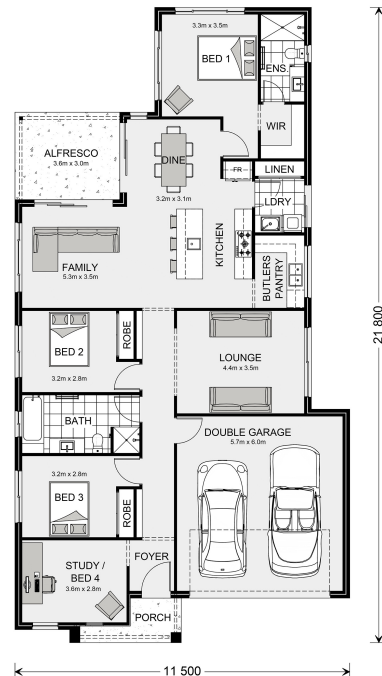
**0 Empire Cct, Dundowran**

Land Area: 675 m<sup>2</sup>

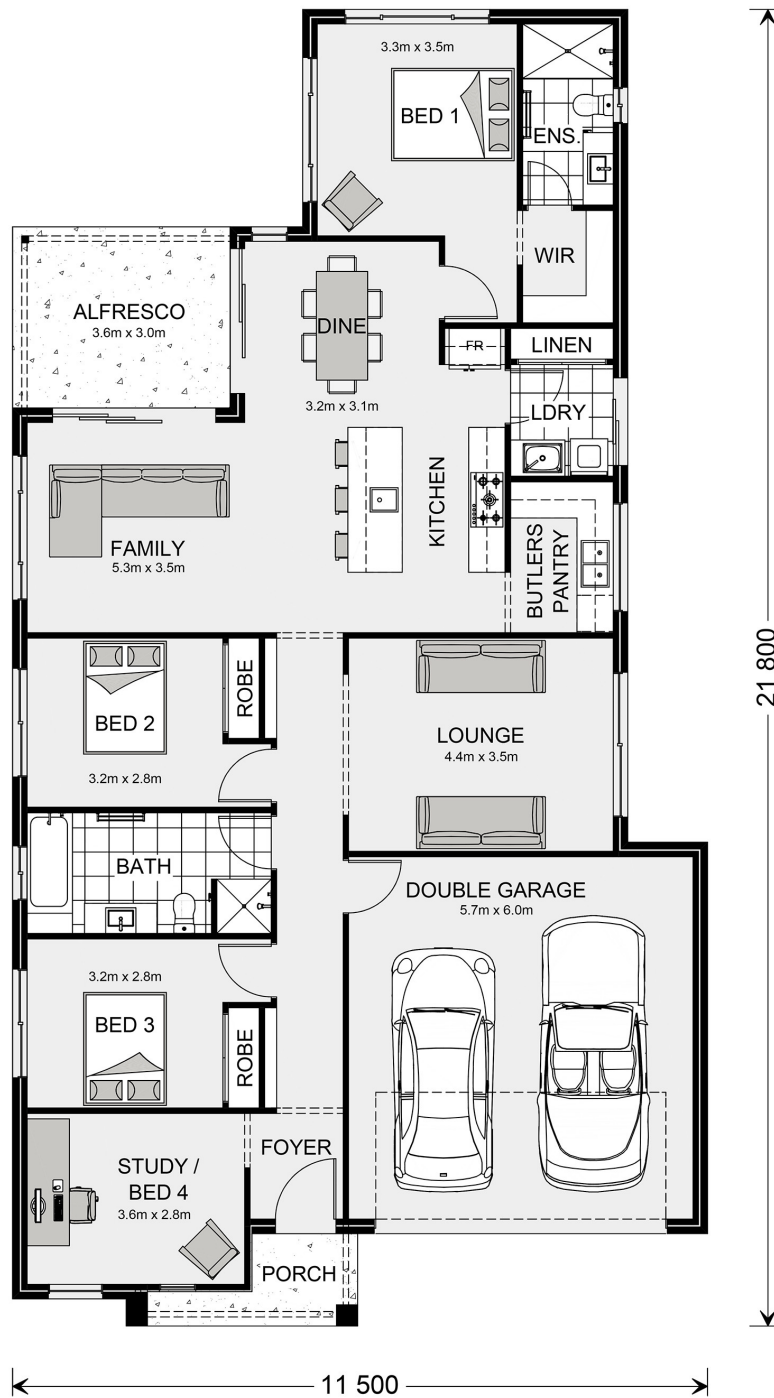
Contact **Jodie Flynn** on **0437 673 737**

**Inclusions:**

- + 205sqm home on 675sqm Block Sage Estate
- + Award Package - See Builder For Full Range
- + 20mm Stone Tops & 90cm Cooking Package
- + 65sqm Exposed Aggregate Driveway
- + Vinyl or Tiles Throughout & Carpet to Bedrooms
- + Pricing subject to Soil Test and Site Survey



\* Price listed is indicative only and does not include stamp duty, legal fees or conveyancing costs. Images may depict optional upgrades including fixtures, fencing, landscaping, features, facades, finishes and/or other items which are not included in the stated price. Further information overleaf. For further information, please talk to a New Homes Consultant or visit our website at <https://www.gjgardner.com.au/house-and-land-pricing>.



\* Package price is based on Edgewater 205 standard floor plan and standard façade (may be smaller than façade shown). Package may be subject to developer's design review panel, council final approval and G.J. Gardner Homes procedure of purchase. Package price excludes stamp duty on land, legal fees and conveyancing costs (including 6 Legal/74189757\_2 transfer of title and searches). Prices are current as of March 24, 2024 and are inclusive of GST. Prices may change without notice. Packages are subject to availability. Package subject to two separate contracts relating to the building and the land respectively. Photographs may depict fixtures, finishes and features not supplied by G.J Gardner Homes. Excluded items may include but are not limited to landscaping items such as planter boxes, retaining walls, water features, pergolas, screens, driveways and decorative items such as fencing and outdoor kitchens or barbeques. Photographs may also depict inclusions not forming part of the standard design and which may be subject to additional costs. This design and illustration remains the property of G.J Gardner Homes and may not be reproduced in whole or in part without written consent. For detailed home pricing, please talk to a New Homes Consultant or visit our website at <https://www.gjgardner.com.au/house-and-land-pricing>. G.J. Hervey Bay Pty Ltd trading as Trading as G.J. Gardner Homes Fraser Coast. Builders License 1172776.